

Plastic Seacocks & Pipe Fittings



SECTION 3

3



- 2-3 ***Forespar Marelon® Seacocks & Valves***
- 4 ***Forespar Marelon® Hose Connectors & Smart Valves***
- 5 ***Forespar Vented Loops & Diverter 'Y' Valves, Marelon® Skin Fittings***
- 6 ***KM Fittings Nylon Skin Fittings***
- 7 ***KM Fittings Diverter Valves, Hose Connectors, Deck Fillers & Pump Out Fittings***
- 8 ***Safi Plastic Fittings & General Hose Connectors***



Five Depots Nationwide

Aquafax Limited, 14 Dencora Way, Sundon Business Park, Luton, Beds LU3 3HP	Tel:(01582) 568700	Fax:(01582) 568720
Aquafax Ltd. (Hamble), 12-13 Mitchell Point, Ensign Business Park, Hamble, Southampton SO31 4RF	Tel:(023) 80457206	Fax:(023) 80457208
Aquafax Ltd. (Plymouth), Unit 5 Plymouth Trade Park, 22 Macadam Road, Plymouth PL4 0RU	Tel:(01752) 669944	Fax:(01752) 667764
Aquafax Ltd. (Middlewich), Unit 11, Valley Court, Sanderson Way, Middlewich, Cheshire CW10 0GF	Tel:(01606) 841111	Fax:(01606) 841188
Aquafax Ltd. (Wroxham), Unit 31 Littlewood Lane, Stalham Road Ind. Estate, Hoveton, Norfolk NR12 8DZ	Tel:(01603) 781881	Fax:(01603) 781981

FORESPAR'S® MARELON® INTEGRATED PLUMBING SYSTEM

Reinforced Marelon® is a formulation of glass reinforced dupont zytel.

Exceeding ABYC recommendations and meeting all UL standards; its unique design provides easy installation in a wide variety of valve configurations.

All Marelon® integrated valves are sold as a complete system. The assembly consists of thru-hull, valve body and tailpipe barb or female pipe thread end. The thru-hulls use a Buttress style thread for exceptional strength and are not compatible with any other valves. **Thru-hulls cannot be sold or used separately.** All valves have one part number for the complete assembly. Each valve is factory assembled and pressure tested. Forespar® cannot be held responsible for valves disassembled and modified or reassembled improperly.

In case of an emergency; all non-screened thru-hull style valve are supplied with a handle cap/bung that is designed to plug the thru-hull from the outside. This plug can be put in place while vessel is in water. The valve can then be removed from the king-nut and any blockage cleared.

Warning - Never leave a boat unattended while bung is in place and valve disassembled. This bung plug is for temporary use only. The bung can also be used during Winter storage to keep debris from collecting inside thru hull.

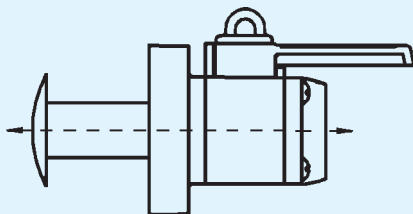
Per ABYC/UL requirements, a flat surface approximately the same diameter as the king-nut is needed inside the hull for proper installation. All valves are full port. The I.D. of the hose barb is carried thru the ball so there is no restriction of flow. Dimensions on request.



Special Features

- Non Corrosive: Long term reliability
- Compact: Ease of installation
- Serviceable: Even afloat
- Easy to operate: Positive action
- High impact strength
- Non conductive
- Fire resistant: test details available
- UV Resistant: Temp. range -120°C to +80°C
- Not affected by bilge cleaners, gas, diesel or oils

REINFORCED PLASTIC SEACOCKS SERIES 93



Mushroom Illustrated

SEACOCK

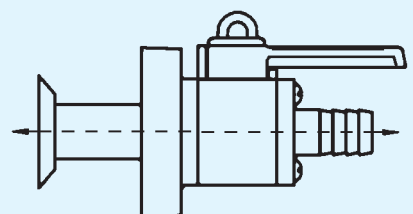
Mushroom outboard fitting.

Part No.	Hose Connection
3-80161	½" BSP
3-80162	¾" BSP
3-80163	1" BSP
3-80164	1¼" BSP
3-80165	1½" BSP
3-80166	2" BSP

Countersunk outboard fitting.

Part No.	Hose Connection
3-80171*	½" BSP
3-80172*	¾" BSP
3-80173*	1" BSP
3-80174*	1¼" BSP
3-80175*	1½" BSP
3-80176*	2" BSP

* TO ORDER ONLY



Counter Sunk Illustrated

SEACOCK

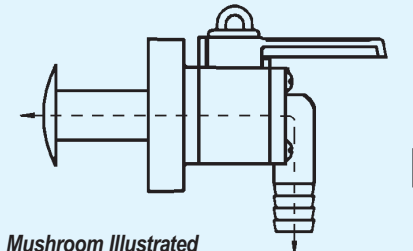
Mushroom outboard fitting

Part No.	Connection
3-80111	½" Hose straight
3-80112	¾" Hose straight
3-80113	1" Hose straight
3-80114	1¼" Hose straight
3-80115	1½" Hose straight
3-80116	2" Hose straight

Countersunk outboard fitting.

Part No.	Connection
3-80141*	½" Hose straight
3-80142*	¾" Hose straight
3-80143*	1" Hose straight
3-80144*	1¼" Hose straight
3-80145*	1½" Hose straight
3-80146*	2" Hose straight

* TO ORDER ONLY



Mushroom Illustrated

SEACOCK

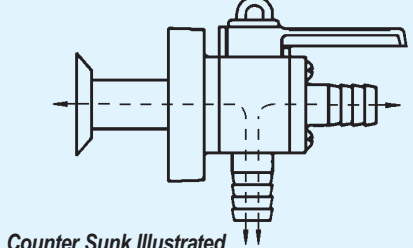
Mushroom outboard fitting

Part No.	Connection
3-80121	½" Hose r/angle
3-80122	¾" Hose r/angle
3-80123	1" Hose r/angle
3-80124	1¼" Hose r/angle
3-80125	1½" Hose r/angle
3-80126	2" Hose r/angle

Countersunk outboard fitting.

Part No.	Connection
3-80151*	½" Hose r/angle
3-80152*	¾" Hose r/angle
3-80153*	1" Hose r/angle
3-80154*	1¼" Hose r/angle
3-80155*	1½" Hose r/angle
3-80156*	2" Hose r/angle

* TO ORDER ONLY



Counter Sunk Illustrated

SEACOCK - L'Port type with two connectors inboard

Mushroom outboard fitting

Part No.	Connection
3-80201	½" Hose
3-80202	¾" Hose
3-80203	1" Hose
3-80204	1¼" Hose
3-80205	1½" Hose
3-80206	2" Hose

Countersunk outboard fitting.

Part No.	Connection
3-80221*	½" Hose
3-80222*	¾" Hose
3-80223*	1" Hose
3-80224*	1¼" Hose
3-80225*	1½" Hose
3-80226*	2" Hose

* TO ORDER ONLY



REINFORCED PLASTIC SEACOCKS & VALVES



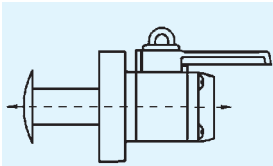
VALVE MAINTENANCE All Forespar® valves are non-corrosive, but like any moving part in a marine environment, they require regular inspection and lubrication. Actuate the handle and lubricate the seals on a regular schedule using Forespar LanoCote® Part No. 5-77791 (see page 5).

MARELON® VALVES WITH BSP STYLE THREADS

SPECIAL SERIES 93 SEACOCK
Threaded BSP parallel into the "King Nut" allowing fitting to Bronze skin fittings and also for hose connections.

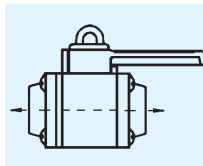
MARELON® VALVES

Designed to meet the needs of builders and owners who require the benefits of the Marelon® integrated plumbing system, with BSP style threads.



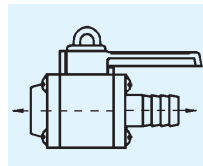
Part No.	Size
12-80183	1" BSPF Straight
12-80184	1½" BSPF Straight
12-80185	1½" BSPF Straight
12-80186	2" BSPF Straight

See Section 2 for Bronze Skin Fittings



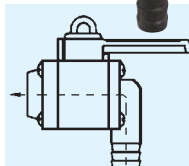
Part No.	Size
3-80071*	½" BSP
3-80072*	¾" BSP
3-80073*	1" BSP
3-80074*	1¼" BSP
3-80075*	1½" BSP
-	-

* TO ORDER ONLY



Part No.	Hose
3-80081*	½"
3-80082*	¾"
3-80083*	1"
3-80084*	1¼"
3-80085*	1½"
3-80086*	2"

* TO ORDER ONLY



Part No.	Hose
3-80091*	½"
3-80092*	¾"
3-80093*	1"
3-80094*	1¼"
3-80095*	1½"
3-80096*	2"

* TO ORDER ONLY

BALL VALVES

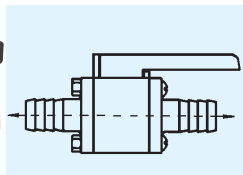
Precision moulded in Marelon® with P.T.F.E. seals. After 11,000 operations a ¾" valve was submerged in water and pressure tested to 80 PS.I. The result was leak free and no evidence of wear on internal seals. Threaded BSP parallel.



Part No.	Thread	Body Ø	Length OA
3-80001	½"	76mm	100mm
3-80002	¾"	76mm	100mm
3-80003	1"	121mm	140mm
3-80004	1¼"	125mm	150mm
3-80005	1½"	130mm	195mm
3-80006	2"	150mm	205mm

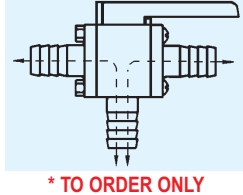
MARELON® VALVES WITH 2 OR 3 HOSE CONNECTIONS

On/off only.



* TO ORDER ONLY

Diverter valve with 3 positions.



* TO ORDER ONLY

Part No.	Hose Size
3-80231*	½"
3-80232*	¾"
3-80233*	1"
3-80234*	1¼"
3-80235	1½"
3-80236*	2"

Part No.	Hose Size
3-80241	½"
3-80242	¾"
3-80243	1"
3-80244*	1¼"
3-80245*	1½"
3-80246*	2"

LOCKING HANDLE OPTION

Forespar offers an optional locking plate installed at the factory on any 93 series integrated seacocks. These locking plates allow the handle to be set in the closed position and a padlock (not supplied) used to positively lock the valve closed. Satisfies USCG requirements.

TO ORDER ONLY

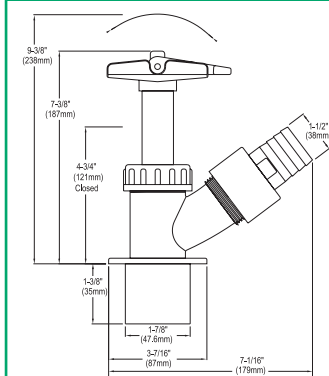


For Part No.s add "LD" i.e. 3-80163LD

ONLY AVAILABLE TO ORDER FOR 1" AND 2" SERIES 93 VALVES. ASK FOR WRITTEN QUOTATION.

Note: Aquafax can supply the padlock (see Section 7). Valve locks are not sold separately and are not a retrofit item.

FLOWTECH™ PERFORMANCE VALVE



Flowtech™ free flow sea valves incorporate the valve body, thru-hull and the choice of all three sizes of hose pipe connectors all in one set. These high performance valves are available for ¾" (19.05mm), 1" (25.14mm) & 1½" (38.1mm) hose sizes.

The Flowtech™ valve can be faired smooth to the boats outer skin so that when the valve is closed, the internal plunger and valve pipe creates a flush, fair and fast outer surface. Made of Marelon®.

Part No. 3-80045

Valve components are not compatible with any other manufacturers' products.





FORESPAR SMART VALVES



FORESPAR SMART VALVE

The Smart Valve provides the safety and assurance of a visual display panel showing which seacock is open or closed without having to go below and pull up floorboards to make a visual inspection.

Factory installed sensors are mounted on the valve using state of the art sensing technology to monitor the valves handle position. The display panels use red and green LED lights to indicate which valve is open (green LED) or closed (red LED). Panels are available in 4, 8 or 12 valve combinations and valve identification names engraved on each panel (e.g Head intake).



Description

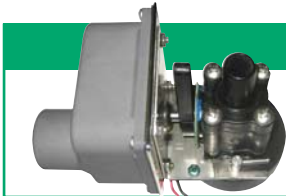
- Forespar Smart Valve Panel 12V 4 Way
- Forespar Smart Valve Panel 12V 8 Way
- Forespar Smart Valve Panel 12V 12 Way
- Forespar Smart Valve Panel 24V 4 Way
- Forespar Smart Valve Panel 24V 8 Way
- Forespar Smart Valve Panel 24V 12 Way

Part No.

- 12-80190
- 12-80191
- 12-80192
- 12-80195
- 12-80196
- 12-80197

TO ORDER ONLY
Check for Delivery Times

Forespar Smart Panels are supplied to order only as a 12 or 24 Volt kit and should be ordered with Forespar Seacocks. Add an "S" to indicate smart valve to the end of the part number (e.g 3-80163S).

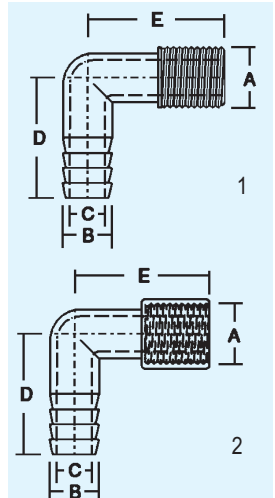
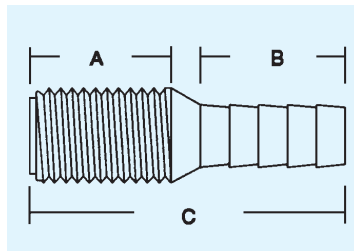


FORESPAR VALVE ROV™ REMOTE OPERATED VALVES

Using powerful sealed motors, valves can be opened and closed with the touch of a button from the control panel

AVAILABLE ON REQUEST - ASK FOR DETAILS & WRITTEN QUOTATION

REINFORCED PLASTIC MARELON® FITTINGS



HOSE CONNECTORS

Part No.	BSP	Hose	A	B	C
3-80401	1/2"	5/8"	25	25	57
3-80402	3/4"	3/4"	25	26	63
3-80403	1"	1"	37	27	75
3-80404	1 1/4"	1 1/4"	42	32	81
3-80405	1 1/2"	1 1/8"	42	32	81
3-80406	2"	2"	44	32	81

WATER STRAINERS

It features an integral mounting bracket and clear polycarbonate lid for ready inspection. The stainless steel strainer basket can be easily removed for cleaning.

Ports: 1 1/2" BSP.
Height: 155mm.
Dia. 160mm.



Part No. Description

- 3-80055 1 1/2" BSP Strainer
- 3-86246 1 1/2" BSP - 1" hose connector
- 3-86248 1 1/2" BSP - 1 1/4" hose connector
- 3-86250 1 1/2" BSP - 1 1/2" hose connector
- 3-80065 1 1/2" BSP - 3/4" BSP reducing bush

ELBOWS

Two versions available, male thread/hose, female thread/hose

Part No.	Item	A	B	C	D	E
3-80411	1	1/2"	5/8"	11	51	38
3-80412	1	3/4"	3/4"	12	54	42
3-80413	1	1"	1"	16	63	47
3-80414	1	1 1/4"	1 1/4"	22	70	54
3-80415	1	1 1/2"	1 1/2"	26	81	70
3-80416	1	2"	2"	38	90	81

Part No.	Item	A	B	C	D	E
3-80421	2	1/2"	5/8"	11	51	42
3-80422	2	3/4"	3/4"	13	54	45
3-80423	2	1"	1"	16	63	48
3-80424	2	1 1/4"	1 1/4"	22	70	63
3-80425	2	1 1/2"	1 1/2"	28	78	70
3-80426	2	2"	2"	39	90	81



VENTED LOOPS & DIVERTER 'Y' VALVES



3-80751

VENTED LOOPS

Installing a vented loop will ensure that fluids will not siphon from a tank or the sea. Vented loops are commonly used in the marine toilet system and engine cooling system.

The simple valve system incorporated in the top of the loop allows air to enter the line when not in use, yet effectively seals as water or other fluid passes through. Molded in Marelon®, neither vent nor loop will corrode. The duckbill one way valve is designed to seal properly if particulate matter is present in fluids.

Hose Size	Height	Width	Part No.
½"	5¼" (133.4mm)	4¼" (108mm)	3-80750
⅝"	4½" (114.3mm)	4" (101.6mm)	3-80751
¾"	4½" (114.3mm)	3¾" (95.3mm)	3-80752
1"	7" (117.8mm)	9" (228.6mm)	3-80753
1⅝"	7" (117.8mm)	9" (228.6mm)	2-80754
1½"	5¼" (133.4mm)	7¾" (196.6mm)	3-80755



3-80753

Spare Vent Cap and Duck Bill Assembly **Part No. 13-80752-3**



3-80022

DIVERTER 'Y' VALVES

Forespar Diverter 'Y' Valves and connectors are moulded from Marelon®. 'Y' Valves are an essential piece of equipment when the flow of water or other fluids are required to be conveniently diverted, as in marine head application where a holding tank is utilised.

Hose Size	Height	Width	Depth	Part No.
¾"	7¼" (185mm)	8" (205mm)	3½" (89mm)	3-80022
1"	3½" (92mm)	4" (99mm)	3½" (89mm)	3-80023
1⅝"	3½" (92mm)	8½" (216mm)	3½" (89mm)	2-80024
1½"	3½" (92mm)	4" (105mm)	3½" (89mm)	3-80025

- They are easily mounted to a bulkhead
- The valves are operated by a simple 120° movement
- Positive stops are provided between positions

'Y' CONNECTORS

- Moulded in Marelon.
- Flange mounting.
- Projection: 60mm.
- Suitable for up to 80 PS.I.
- Flange Diameter: 89mm



3-80033

Hose Size	Part No.
1"	3-80033
1½"	3-80035

LANOCOTE® – CORROSION CONTROL



- Prevents thread freeze-up
- Prevents electrolysis corrosion
- Seals porous surfaces
- Neutralizes acids, alkalis, salts

LanoCote® 4oz jar
Part No. 5-77791

LanoCote® is the choice of marine professionals for long term corrosion control. It is extremely effective in preventing and stopping corrosion on all types of metals under all environmental conditions.

Formulated to withstand salt water marine conditions, LanoCote® is particularly useful in preventing thread seizure due to all types of corrosion on boats and machinery. Applied during assembly, LanoCote® will greatly assist in easy dismantling years later.

REINFORCED PLASTIC SKIN FITTINGS



Available in three versions. Precision moulded in high strength glass reinforced Marelon®. Makes them suitable for either above or below waterline.



MUSHROOM HEAD

Part No.	Hose Size
3-80501	⅝"
3-80502	¾"
3-80503	1"
3-80503A	1⅝"
3-80504	1¼"
3-80505	1½"
3-80506	2"



MUSHROOM HEAD BSP

Part No.	Thread	Length
3-80511	½"	2"
3-80512	¾"	2¼"
3-80513	1"	2⅝"
3-80514	1¼"	3"
3-80515	1½"	3"
3-80516	2"	3"



COUNTERSUNK HEAD BSP

Part No.	Thread	Length
3-80521	½"	2"
3-80522	¾"	2¼"
3-80523	1"	2⅝"
3-80524	1¼"	3"
3-80525	1½"	3"



DECK DRAINS

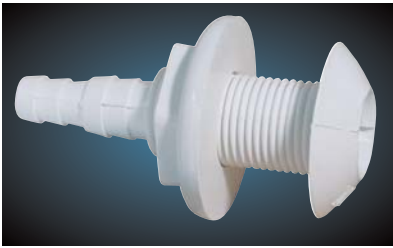
Flush countersunk head. Made in Marelon 1½" & 2". Fitted with integral grate, (*not 1¼" hose model).
Colour: off white

Part No.	Hose	Thread Length
3-80534	*1¼"	1¼"
3-80535	1½"	1¼"
3-80536	2"	1½"



KM FITTINGS

The KM fittings below are moulded in off white Nylon, a strong, stable material unaffected by extreme temperature. These fittings represent high quality at a very competitive price.



SKIN FITTINGS

Straight type for either.

Part No.	Thread	ID Hose
3-85000	½" BSP	¾" or ½"
3-85001	1" BSP	¾" or 1"
3-85002	1½" BSP	1¼" or 1½"

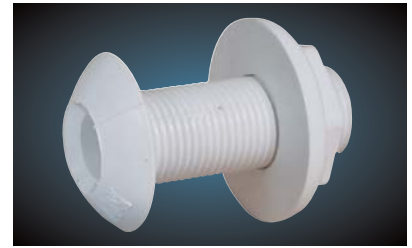


SKIN FITTINGS

Long, one size hose tail design.

Reduces fitting time & errors encountered with dual hose type. Enables two clip fitting.

Part No.	Thread	Hose
3-85510	½" BSP	½"
3-85530	1" BSP	¾"
3-85550	1" BSP	1"
3-85560	1" BSP	1⅛"
3-85590	1½" BSP	1½"



SKIN FITTINGS

BSP Threaded type.

Part No.	Thread	Length (exc nut)
3-85011	½"	53mm
3-85013	1"	54mm
3-85015	1½"	55mm



SKIN FITTINGS 90°

Part No.	Thread	Hose
3-85050	½" BSP	¾" / ½"
3-85051	½" BSP	½"
3-85060	1" BSP	¾" / 1"
3-85062	1" BSP	¾"
3-85063	1" BSP	1"
3-85070	1½" BSP	1¼" / 1½"
3-85075	1½" BSP	1½"



ELBOWS

BSP female / female

Part No.	Thread
3-85041	½" BSP
3-85043	1" BSP
3-85045	1½" BSP



ELBOWS FOR HOSE 90°

Part No.	Hose
3-85370	¾" / ½"
3-85371	½"
3-85380	¾" / 1"
3-85382	¾"
3-85383	1"
3-85390	1¼" / 1½"
3-85395	1½"



COCKPIT DRAIN

Countersunk c/w grating, for flush fitting up to 40mm deck.

1 ½" ID hose. O. dia. 68mm.

Part No. 3-85035



BULKHEAD FITTINGS

Supplied as threaded pipe with fixed flange & adjustable back nut.

Part No.	Thread	Length
3-85081	½" BSP Male	70mm
3-85083	1" BSP Male	70mm
3-85085	1½" BSP Male	73mm

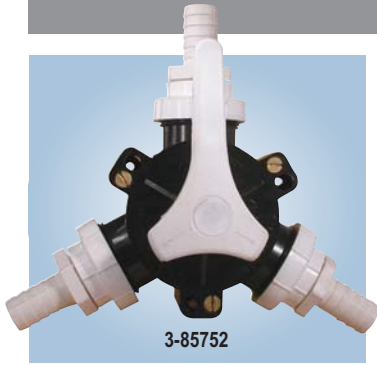


CONNECTORS

Female reducing connector
Length ⅞" (22mm)

Part No.	Thread
3-85091	½" BSP
3-85093	1" BSP
3-85095	1½" BSP
3-85098	1½" - 1" BSP

KM FITTINGS



DIVERTER VALVE

Two way valve for liquids and semi solids. May be used with hand or power operated pump, and ideal for bilges or toilet uses. Moulded in PVC bore full 1½" (38mm) bore. Supplied either complete with hose connectors fitted (cheaper) or with hose connectors separate to suit application.

Description	Connectors	Part No.	
Diverter valve only threaded	1½" BSP Male	3-85750	• Size: Dia. approx 4¾" (120mm)
Diverter valve complete with hose connections	for ¾" ID Hose	3-85752	• Projection: 4⅝" (117mm)
Diverter valve complete with hose connections	for 1" ID Hose	3-85753	• Outlets: 1½" BSP male
Diverter valve complete with hose connections	for 1¼" ID Hose	3-85754	• Three hole fixing
Diverter valve complete with hose connections	for 1½" ID Hose	3-85755	• All spares available



DECK FILLERS

- Moulded in nylon and resistant to diesel
- Cap is slotted for plastic key supplied
- Cap secured by c/p brass ball chain
- Bodies and caps available in different colours for fuel or water.
- O.A. dia. 95mm.

Spares	Part No
Spare Key	3-85940
White Filler Cap (Water)	3-85941
Blue Filler Cap (Water)	3-85942
Red Filler Cap (Diesel)	3-85943
White Filler Cap (Diesel)	3-85944

Body	Cap	Legend	Hose	Part No.
White	White	Diesel	1½"	3-85910
White	Red	Diesel	1½"	3-85912
White	White	Diesel	2"	3-85920
White	Red	Diesel	2"	3-85922
White	White	Water	1½"	3-85911
White	Blue	Water	1½"	3-85913
White	White	Water	2"	3-85921
White	Blue	Water	2"	3-85923



PUMP OUT FITTING

Designed for closed toilet systems and the nozzle from shore pump out stations. Moulded in black nylon and c/w key. Cap is fitted with ⅝" hex, socket for opening with special key supplied.

O.A. Dia: 3¼" (95mm) Deck aperture: 54mm

For 1½" Hose	Part No. 3-85955
Spare Key	Part No. 3-85959
Spare cap black	Part No. 3-85957

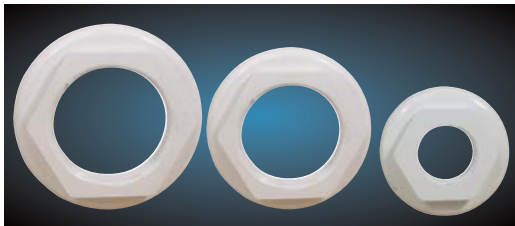
HOSE CONNECTORS

BSP Male or female thread. Available as single or dual hose types, or join them to make connectors for different size hoses.



Thread	Hose	Part No.
½" BSP (Male)	⅝" / ½" Hose	3-85210
½" BSP (Male)	½" Hose	3-85211
1" BSP (Male)	¾" / 1" Hose	3-85230
1" BSP (Male)	¾" Hose	3-85232
1" BSP (Male)	1" Hose	3-85233
1½" BSP (Male)	1¼" / 1½" Hose	3-85250
1½" BSP (Male)	1½" Hose	3-85255

Thread	Hose	Part No.
1½" BSP (Female)	¾" / 1" Hose	3-85270
1½" BSP (Female)	1¼" / 1½" Hose	3-85280
1½" BSP (Female)	¾" Hose	3-85302
1½" BSP (Female)	1" Hose	3-85303
1½" BSP (Female)	1½" Hose	3-85305



PLASTIC BACKNUTS

Hex. shouldered flange

Thread	Part No.
½" BSP	3-85971
1" BSP	3-85973
1½" BSP	3-85975

FUELOCK PLASTIC LOCKABLE DIESEL FILLER CAP

With increasing costs of fuel, theft from fuel tanks has increase and more boat owners are looking to make fuel tanks secure.

- Available in 1¼" BSP and 1½" BSP
- Supplied with multi fixing adaptor flange fitting a wide range of existing deck fillers & two keys
- Self-closing lock cover keeping the elements out of the locking mechanism
- Marked 'DIESEL' or 'PETROL' (1½" only) on filler cap for BSS and RCD
- 1½" suitable to fit 2-76720/25/70/73 and 86 deck fillers*



Size	Type	Part No.
1½" BSP	PETROL	2-76693
1¼" BSP	DIESEL	2-76695
1½" BSP	DIESEL	2-76696

*Shown in Section 2





SAFI PLASTIC FITTINGS



P.V.C. BALL CHECK VALVE

- EPDM Seals
- Single union
- Threaded BSP parallel
- Not suitable for diesel

Part No.	BSP	Length	O.Dia.
3-86021	1/2"	91mm	48mm
3-86022	3/4"	105mm	60mm
3-86023	1"	117mm	70mm



HOSE CONNECTORS Male BSP Parallel thread.

Part No.	BSP	Hose	Mat	Part No.	BSP	Hose	Mat
3-86200	3/8"	3/8"	GRPP	3-86248	1 1/2"	1 1/4"	GRPP
3-86210	1/2"	1/2"	GRPP	3-86250	1 1/2"	1 1/2"	GRPP
3-86218	3/4"	1/2"	GRPP	3-86257	2"	1 1/4"	GRPP
3-86220	3/4"	3/4"	GRPP	3-86258	2"	1 1/2"	GRPP
3-86230	1"	1"	GRPP	3-86260	2"	2"	GRPP
3-86240	1 1/4"	1 1/4"	GRPP	3-86280	3"	3"	GRPP
3-86246	1 1/2"	1"	GRPP				

SAFI BULKHEAD FITTINGS

Heavy duty fittings moulded in black glass reinforced polypropylene. Threaded BSP complete with E.P. gasket & large black nut.



Part No.	BSP	Length O.A.
3-86331	1/2"	85mm*
3-86332	3/4"	85mm
3-86333	1"	105mm
3-86334	1 1/4"	105mm
3-86335	1 1/2"	105mm
3-86336	2"	105mm

*TO ORDER ONLY

SAFI UPVC & GRPP BALL VALVES AVAILABLE TO ORDER

HOSE CONNECTORS



ELBOWS
Equal ends

Hose	Part No.
3/8"	9-69070
1/2"	9-69071
3/4"	9-69072
1"	9-69073
1 1/4"	9-69074
1 1/2"	9-69075
2"	9-69076



STRAIGHT CONNECTORS

Hose	Part No.
3/8"	9-69080
1/2"	9-69081
3/4"	9-69082
1"	9-69083
1 1/4"	9-69084
1 1/2"	9-69085
2"	9-69086
1/2" - 3/8"	9-69087



TEE
Equal ends

Hose	Part No.
3/8"	9-69090
1/2"	9-69091
3/4"	9-69092
1"	9-69093
1 1/4"	9-69094
1 1/2"	9-69095
2"	9-69096



"Y" CONNECTOR

Hose	Part No.
3/8" 'Y' Conn.	9-69220
1/2" 'Y' Conn.	9-69221
3/4" 'Y' Conn.	9-69222



90° PLASTIC SWEPT BEND

- Designed for domestic systems
- Inexpensive smooth bore fittings
- Non-barbed

Hose	Part No.
1 1/4" Hose	9-96934
1 1/2" Hose*	9-96935

* Ideal for toilets and sanitation hose

NPT HOSE CONNECTORS



Thread	Hose	Part No.
1/2" NPT(M)	1/2"	3-95011
1/2" NPT(M)	3/4"	3-95012
3/4" NPT(M)	1/2"	3-95021
3/4" NPT(M)	3/4"	3-95022
3/4" NPT(M)	1"	3-95023
1" NPT(M)	3/4"	3-95032
1" NPT(M)	1"	3-95033
1 1/2" NPT(M)	1"	3-95053
1 1/2" NPT(M)	1 1/4"	3-95054
1 1/2" NPT(M)	1 1/2"	3-95055
2" NPT(M)	1 1/2"	3-95065
2" NPT(M)	2"	3-95066

PLASTIC UNEQUAL HOSE CONNECTOR (13 - 38mm Hose)

The connector is stepped and can be cut to join many hose sizes.

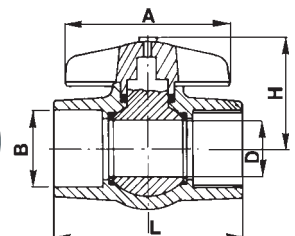
Hose increments are: 13mm, 16mm, 19mm, 22mm, 25mm, 28mm, 32mm and 38mm.



Part No. 9-96979

UPVC COMPACT BALL VALVES

- Strong, with slim, simple design
- Open/close by 90° handle rotation
- P.T.F.E. seats and EPDM seals
- BSP parallel sockets
- Nominal pressure 10 bar at 20°C



AVAILABLE TO ORDER

Part No.	BSP	A	B	D	H	L
3-86000	3/8"	42	16	9	38	58
3-86001	1/2"	74	20	15	51	76
3-86002	3/4"	74	25	20	56	94
3-86003	1"	98	32	25	61	110
3-86004	1 1/4"	98	40	25	63	120
3-86005	1 1/2"	118	50	32	68	134
3-86006	2"	118	63	41	77	161

Other Safi UPVC & GRPP ball valves are available to order.

Full range and technical details available on request.

For more information on these and other products see our website:

www.aquafax.co.uk